

Reencle

User manual

Reencle Prime

Food Waste Composter



Content

01. Safety Precautions

02. Meet Reencle Prime

03. Initial Setup

04. Part names and Features

05. Ongoing use and operation

06. Acceptable and Prohibited Food Waste

07. Managing Microorganisms Byproduct/Compost

08. Frequently Asked Questions

09. Replacement Alerts & Warnings

Please read the following instructions carefully before use.

- This Instruction Manual contains Reencle Warranty
- This Warranty does not apply to non-Reencle branded products, even if packaged or sold with Reencle hardware
- This Warranty is governed by and construed under the laws of the country in which the Reencle product purchase took place.
- Warranty Service will be limited to the options available in the country where service is requested. Service options, parts availability and response times may vary according to country.

01. SAFETY PRECAUTIONS

IMPORTANT SAFETY INSTRUCTIONS


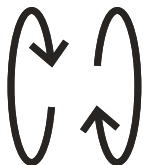

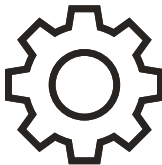
WARNING: your satery is important to us. Read this guide carefully for important usage and safety information, and strictly follow the safety rules. Proper and safe use of your Reencle Prime is your responsibility. To reduce the risk of fire, electrical shock, injury to persons or damage when using your Reencle Prime, follow basic safety precautions including the following:

Note: Power cord and voltage will vary by country.

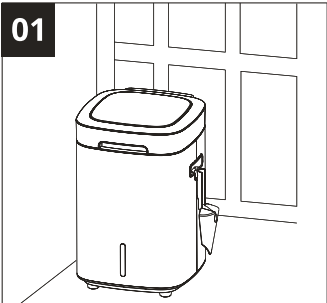
“This appliance is not intended for use by persons (including children) with reduced physical, sensory, or mental capabilities, or lack of experience and knowledge, unless they have been given supervision or instruction concerning use of the appliance by a person responsible for their safety.

- | | |
|---|--|
| <ul style="list-style-type: none">• Read this guide before using your Food Waste composter• use your Food Waste Composter only as described in the manual.• To reduce the risk of electrical shock, do not use outdoors on wet surfaces.• Disconnect electrical supply before servicing or cleaning the inside of the chamber. Failure to do so may result in electric shock or injury.• Always turn off the power button before unplugging.• Do not use the Food waste Composter if it is not working as it should, if it has been dropped, damaged, left outdoors or dropped into water.• To unplug, grasp the plug, not the cord; do not unplug by pulling the cord. | <ul style="list-style-type: none">• Do not use with a damaged cord or plug.• Do not pull or carry the Food Waste Composter by its cord, use cord as a handle, close a door on cord, or pull cord around sharp edges or corners.• Keep cord away from heated surfaces.• Do not allow Food Waste Composter to be used as a toy. Close attention is necessary when used by or near children.• Do not handle plug or Food Waste Composter with wet hands.• Avoid putting any plastics, glass, metals, wood, chopsticks, biodegradable containers or flatware, bones, or other materials that people cannot eat in the Food Waste Composter. |
|---|--|

02. Meet Reencle Prime

	Microorganism	Reencle Prime is a home food waste composter that uses Reencle's patented microorganisms to break down food waste naturally, and turn it into compost.
	Stirring chamber	Reencle Prime regulates temperature and continuously stirs to create an optimal environment for Reencle's microorganisms. The continuous stirring helps to break down food waste, while the consistent temperature allows the microorganisms to remain active in fermenting and decomposing food waste in a relatively short period of time.
	Odor free & silent	Reencle is odor free thanks to the three-layer filtering system that incorporates a charcoal filter. The charcoal filter is located on the back of the Reencle Prime receptacle, and can be removed and replaced. Reencle Prime is essentially silent, allowing it to seamlessly integrate into your everyday life.
	Design	Reencle is designed to be used indoors, with convenient features. The motion sensor, located in the front of the receptacle, will automatically open the lid when you approach, making it easy to dispose of food waste. There are also features available for drying and purifying contents as well as locking various controls.

03. Initial setup

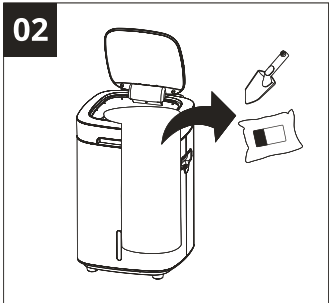


Unpack your Reencle Prime and place it on a flat surface in a well ventilated area.

Allow 10 cm between the machine and the back wall for proper ventilation.

Only to be used indoors where temperatures never fall below 0°C

Do not install it in a watery area or where the machine could be exposed to rain.



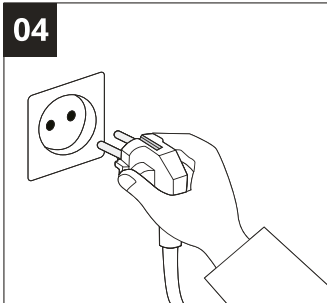
Take out all content from inside the stirring chamber.



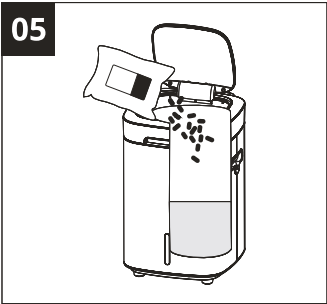
Remove the sticker on the carbon filter.

Reencle Prime will arrive with the carbon filter already installed. Check your filter for a yellow sticker, and remove the sticker before using.

If you ordered an extra carbon filter, store it indoors in a dry place for later use.



Plug in the Reencle Prime and press the power button.



Open the bag of Compost Starter and pour it all into the stirring tank.

In its initial stage the Compost Starter contains microorganisms that resemble sawdust with pellets.

As it begins to work and culture normally over the next four weeks it will begin to resemble a brown, soft soil like texture.



Pour 7 cups (1-1.7 l) of water into the stirring tank with the Compost Starter.

Close the cover.



Let the Compost Starter and water process for 18-24 hours.

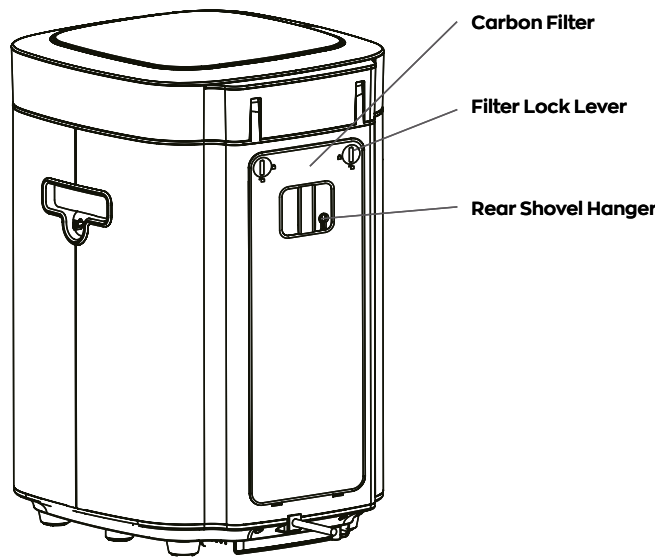
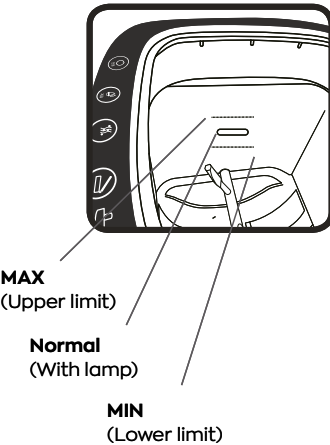
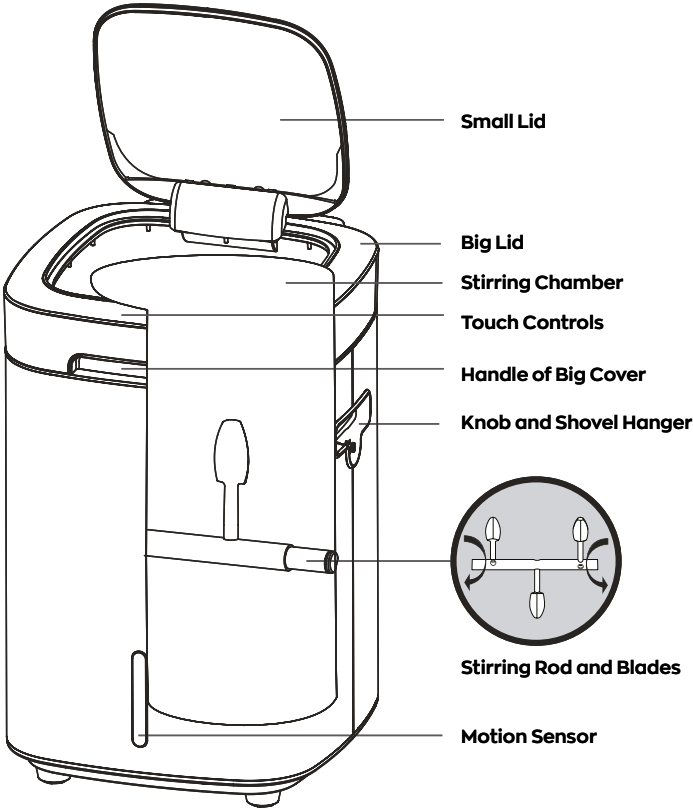
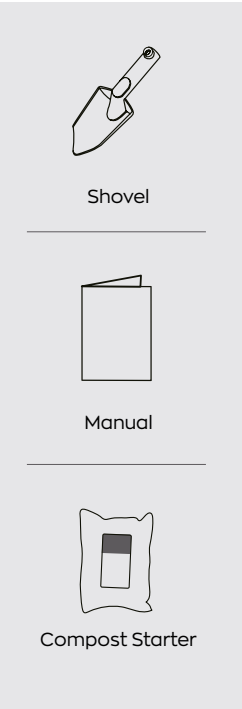
Don't put any food waste into the machine yet.



After 18.24 hours, you may begin adding food waste to your Reencle Prime.

04. Part names and Features

Accessories found inside the Stirring Chamber.



Control buttons

Reencle Prime's touch controls are located on the top of the receptacle. Functions are as follows:



Power

Press the power button to turn on and off the device.

Always keep the power turned on. Reencle is equipped with an automatic sleep mode. In the case of a service or repair, power off first, and then unplug the device.



Dry

Press this button when the internal contents of the Stirring Chamber become soggy with too much water.



Purify

Press this button if you notice a bad odor, to help reduce the smell.



Open

Press this button to open the small cover of Reencle to deposit food waste.



Check

Indicates product errors in the product or buttons through flickering LED with alarm sounds.



Lock

The open button includes a Lock feature. How to operate the lock button:

1st click

Press and hold the lock button for three seconds to disable the sensor that automatically opens the lid.

A red LED will flash and now you need to press the open button in order to open the lid. The sensor will no longer be active.

2nd click

Press and hold the lock button for three seconds a second time to also turn off the open button.

A red LED will turn on around the open button. In this setting neither the automatic sensor nor the open button will open the small lid.

3rd click

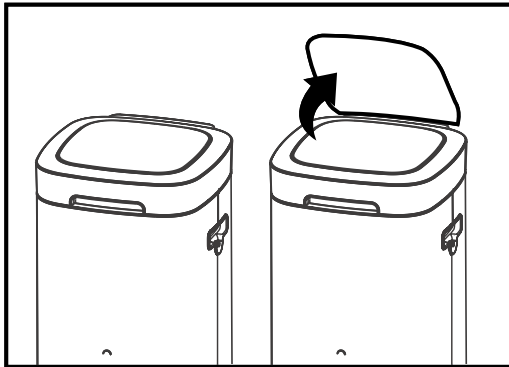
Press and hold the lock button for three seconds a third time to go back to default setting.

Now both the sensor and the open button will function as normal.

05. Ongoing use and operation

Accessories found inside the Stirring Chamber.

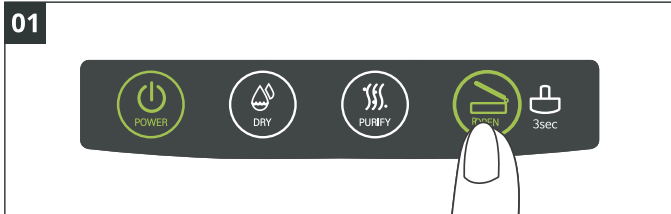
01 Open the small Lid
Press this button if you notice a bad odor, to help reduce the smell.



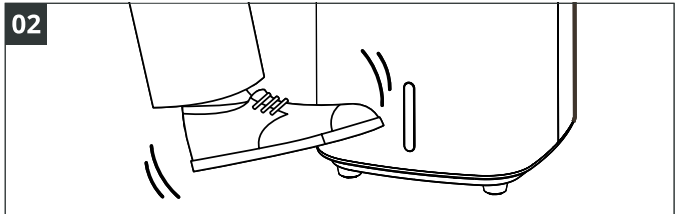
Open the small lid to add food scraps to Reencle prime Stirring Chamber.
When the small lid is open, the stirring rod will temporarily stop. It will start again automatically when the lid closes.

You can open the small lid in two ways

Press this button if you notice a bad odor, to help reduce the smell.



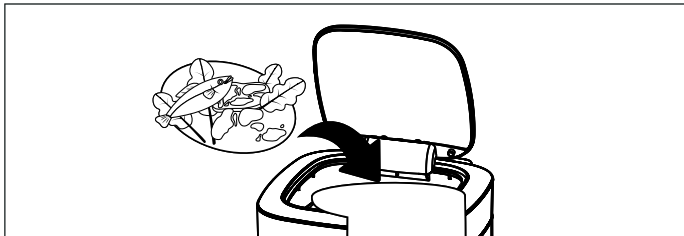
Open button: Press the Open button open or close the small lid.



Open button: Approach the front of Reencle Prime slowly, and cover the sensor with your foot. Hold your foot in front of the sensor for 2-3 seconds and the lid will automatically open.

When the sensor is operating a green light will flash on the front sensor. Depending on the lighting conditions of the installation environment, the sensing speed may differ.

02 Add food scraps to Reencle Prime



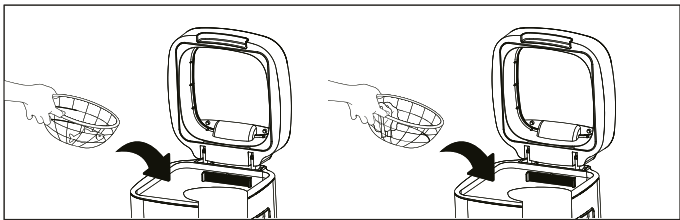
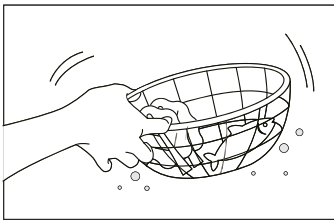
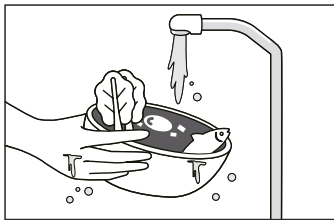
Add food waste to Reencle Prime throughout the day. For larger items (e.g. banana peels, stems) chop into smaller pieces. This will prevent issues with the stirring rod and help food scraps break down faster.

03 Properly Maintain Food Waste Input
The optimal daily amount to add to Reencle Prime is 0,7kg per day, and a maximum of 1kg per day. Follow this recommendation to ensure the best result.

Separate food scraps from general waste to ensure only acceptable food waste goes into Reencle Prime.

Chop up large items, such as banana peels, cabbage leaves, and green onions into smaller pieces.

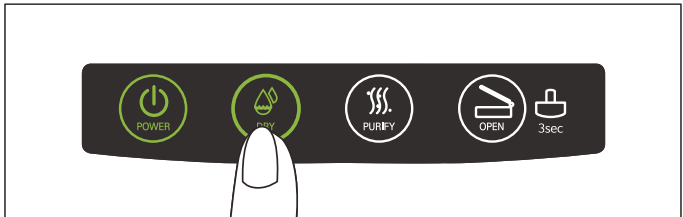
For larger volumes of scraps, place them into the stirring chamber in smaller batches, allowing Reencle Prime to mix between intervals.



Avoid putting overly salted foods or sauces into Reencle Prime since this can interfere with the decomposition process. If adding foods with sauce or salt, rinse before placing in the Reencle Prime

For large amounts of watery waste, divide it into smaller portions and feed portions to the Reencle Prime in several batches.

04 Manage internal Contents



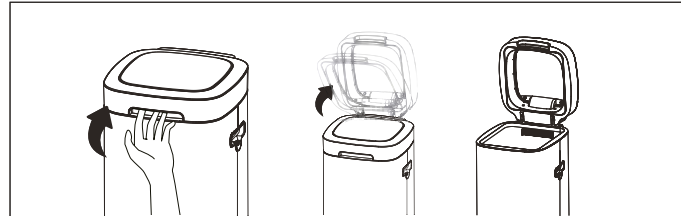
If the contents of the Stirring Chamber become boggy and have too much water, press the Dry button and do not add food waste for one or two days or until it becomes dry again.

After food is put in, water droplets may form on the cover due to the temperature difference inside and outside the machine. These droplets are normal and caused by microbial fermentation so are not symptom of content being too wet inside the Stirring Chamber.

After 24 hours, most of the food waste will have been fermented and decomposed.

05 Open the Large Lid

Open the large lid when it's time to remove compost from Reencle Prime's Stirring Chamber. Place your hand on the handle, located at the front of the machine and gently pull it upward. The large lid will open for access to contents inside the Stirring Chamber.



When the large lid is open, the Stirring Rod will temporarily stop. It will begin automatically stirring again when the lid closes. However, before removing compost, power off the Reencle Prime using the power button to ensure maximum safety.

Once the decomposed waste reaches the limit line, noted on the interior of the stirring tank, use the included shovel to scoop out compost until it reaches the minimum line.

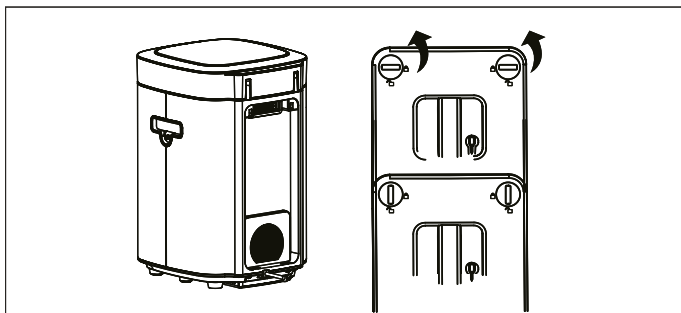
Always leave the Stirring Chamber filled to the "MIN" line in order to continue the microorganisms fermentation and decomposition process in place.

Moisture and any odors are emitted in the form of purified vapor air through the bottom of the machine via the automatic dehumidification function.

06 Tips for proper Care of Reencle Prime

Before putting food waste into the Reencle Prime, rinse the food with running water and pat it dry. This ensures optimal performance for the fermentation and decomposition process.

Frequently clean the mesh filter, located inside the Stirring Chamber, using a cleaning brush. The mesh filter can be removed, washed with water, and placed in the Reencle Prime again.



The purifier filter, located on the back of the Reencle Prime, should last up to 9-12 months. Remove the purifier filter, rotate the two plastic screws on both sides counter-clockwise to the unlock position and remove the filter. To reinstall, place the new filter in the same position, insert the plastic screws and rotate clockwise to the lock position.

To purchase a purifier filter, please visit the vendor you purchased the Reencle Prime from or visit www.vetapiens.com.

If you will not use the Reencle Prime for an extended period of time (1 month or more), use the following steps:

01 - Stop adding food waste to the Reencle Prime and allow it to fully decompose all food waste.

02 - Unplug the Reencle Prime, scoop out all of the byproduct from the Stirring Chamber, and place it in a well-sealed container. Store the byproduct in a well-ventilated area. Avoid placing it in sunlight. The byproduct can then be reused when you return.

06. Acceptable and Prohibited Food Waste



Acceptable Food Waste:

Most items decomposed within 24 hours



Protein



Cooked Egg



Fruit



Grains



Nuts



Cooked Vegetables



Legumes



Cheese



Carbohydrates



Spreads
(e.g. butter, jam)



Eggshells



Coffee Grounds



Pizza Crust



Watermelon Rind



Sausage, Salami



Spreads (e.g. peanut butter, Nutella)



Raw Vegetables
(e.g. carrots, corn, cucumbers, cabbage)



Stems, Roots (e.g. chives, onions)



Prohibited Waste



Bones



Shells



Pits (e.g. avocado, plum)



Solid Shells (e.g. walnut, pomegranate)



Plastic



Rubber



Glass



Medicine



Cleaners, Chemicals



Cigarettes



Produce Stickers



Biodegradable Containers, Flatware



Tape



Cardboard

07. Managing Microorganisms Byproduct/Compost

Managing the Microorganisms

Reencle Works like a digestive system, using oxygen, microorganisms, and heat to break down food waste into compost. Taking care of your microorganisms is key to maintaining an optimal environment for composting. They are resilient, so even if the system gets too wet or dry, they will thrive with a balanced diet. For best results, follow Section 5.

Initially, microorganisms will look like sawdust mixed with small charcoal pieces (carbon). Over time, the carbon will disappear as your compost matures. It jump-starts microbial growth but isn't needed continuously.



What is Composting and Compost?

Reencle speeds up composting by using microorganism, oxygen, moisture, and heat to decompose food waste into compost. It simulates "hot composting", producing compost that requires curing after removal.

Composting: The controlled, aerobic breakdown of organic materials by microorganisms.

Compost: Dark, crumbly, earthy-smelling material produced from the aerobic decomposition of organic matter.

Using Reencle Compost

The quality of your compost depends on what you feed Reencle and how long it stays in the unit. Although 90% of food waste breaks down in 24 hours, longer decomposition leads to better results. Let the unit run for 48 hours without adding waste before removing compost, ensuring it's fully broken down.

When the compost reaches the MAX line, scoop it out down to the MIN lines, leaving the chambers 1/3 full. Sifting out larger pieces will speed up the curing process, but it's optional.

Curing: Compost takes about 3 weeks to fully cure, depending on its time in the unit. Unstable compost can be used as mulch but shouldn't touch plant roots. For soil amendments, mix 1 part compost, with 4 parts soil and let it cure for 3 weeks in a breathable container. Cured compost will resemble dark, crumbly soil with an earthy smell. If it smells sour or is still warm, it needs more time to cure.

What is White Mold?

White mold is normal and harmless; actinomycetes help break down substances like lignin and glucose, aiding plant growth and protecting against pathogens. Your compost should have an earthy smell.

08. Frequently Asked Questions

Q. There is condensation on the inner surface of the cover and on the inner sides of the product.

The internal temperature of the product is set to be maintained at 50-60 degrees Celsius, which is suitable for culturing microorganisms. When 6-7 cups of water is initially added, or in the course of general food decomposition, condensation may occur on the cover and the inner walls due to the difference between the internal and external temperature. Condensation is a natural phenomenon and is not considered to be a problem.

Q. Mold has grown on the inner walls and microorganisms.

Mold is often found over the microorganisms, inner sidewalls, and the stirring rods, but has nothing to do with microorganisms. Use the shovel provided to mix it with the byproduct inside the stirring chamber and the mold will disappear after a few hours as they are decomposed with the mixture. Keeping the interior walls clean will help prevent mold.

Q. Microbes have accumulated and set on the corners and walls of the tank.

The stirring rod rotates near the center of the product. Although it mixes most microorganisms, byproduct may collect in the corners, leaving microbes to accumulate on the corners and walls. Use the provided shovel to scrape these microbes and mix them with the mixture before adding food.

Q. If I am away from home for days, do I need to take any special measures?

- If you are away from home for less than 7 days, use Reencle as you normally would, and refrain from putting food in the Reencle Prime for two days before your departure.
- If you'll be away for more than 7 days, stop adding food to Reencle Prime 2 days before leaving to allow time for the existing waste to decompose. On the day of departure, turn off the product and unplug the power cord.
- You do not need to remove the byproduct/microorganisms from Reencle Prime. Simply leave it closed. When you return, turn on the Reencle Prime, add two cups of water to the mixture and leave it for 4-6 hours before starting to use it again.

Q. Microorganisms agglomerate (clump)

The aggregation of the microorganisms found inside of the product indicates insufficient decomposition of the microorganisms. Give them more time for decomposition and do not add additional waste into the Reencle Prime. After the microorganisms return to their original form, which may look like soil, it indicates that it is ready again to decompose the food.

Q. Does Reencle stop functioning when the cover is opened?

For safety measures, the stirring rod functions only when the covers are closed.

Q. What should I do when the microorganisms are dry?

- The inside of Reencle Prime consists of heat insulating materials, keeping the condition ideal for the microorganisms to decompose foods when in operation. If little or no food is added, the inside of Reencle Prime may become dry, Reencle Prime may cause noises. In this case, the inner walls of the Reencle may also become soiled with particles, the filter contaminated, and powders may be released to the air.
- When dry, input additional food waste or 500-900ml of water in order to prevent friction within the Reencle.

Q. How do I clean the Reencle

Do not clean/rinse Reencle Prime with water. Mechanical breakdowns may occur from cleaning Reencle with water, and expenses may occur. If the inner walls of the Reencle Prime is soiled with particles, wipe the walls with a wet wipe.

Q. What are the black fragments in the microorganisms?

The black fragments are activated carbon. They serve the purpose of providing a steady supply of oxygen to the microorganisms during the initial stages of cultivation, as well as deodorizing. Activated carbon help the young microorganisms adapt faster to the environment inside, but lack of activated carbons does not affect the decomposing capabilities. Therefore, carbon does not need to be sifted and replaced.

You can either remove them when your compost reaches the MAX line or leave them in the Reencle.

09. Replacement Alerts & Warnings

Alerts, indications, and responses

Alert	Issue	Action
Open button blinks/ Alarm at 10 second intervals	Lid is open	Check and close the lids
Purify button blinks/ Alarm at 10 second intervals	Fan motor problem	Contact customer center
Dry button blinks/ Alarm at 10 second intervals	Drum heater problem	Contact customer center


When a product malfunction occurs, please contact our Customer Center for support.


The company is not responsible for any accident caused by non-designated person repairing or altering the machine.

Customer Service

Please contact our customer service regarding, return, exchange or refund of Reencle. Reencle representative for a return, exchange or refund. Products purchased outside of Veta Sapiens (GPBM Nordic) should contact the channel you have purchased the machine in matters of return, exchange or refund.

Contact Information

 Call: +46 (0)31 799 16 00
Mail: info@vetasapiens.com

 instagram: vetasapiens

 Facebook: vetasapiens



A stylized illustration of a plant in a pot, with a grid pattern overlaid on the background. The plant has green leaves and is in an orange pot. The grid is composed of light orange lines on a white background. The overall background is a light orange color with a dark orange wavy shape at the bottom.

Reencle

Marketed and sold by GPBM Nordic AB

+46 (0)31 799 16 00

info@gpbmnordic.se